



SURVEY VESSEL

Skjold R

Skjold R is an agile survey vessel. With an innovative **multibeam system**, this vessel is capable of making **highly accurate surveys**, usable for sea mapping, volume verifications, and volume calculations.

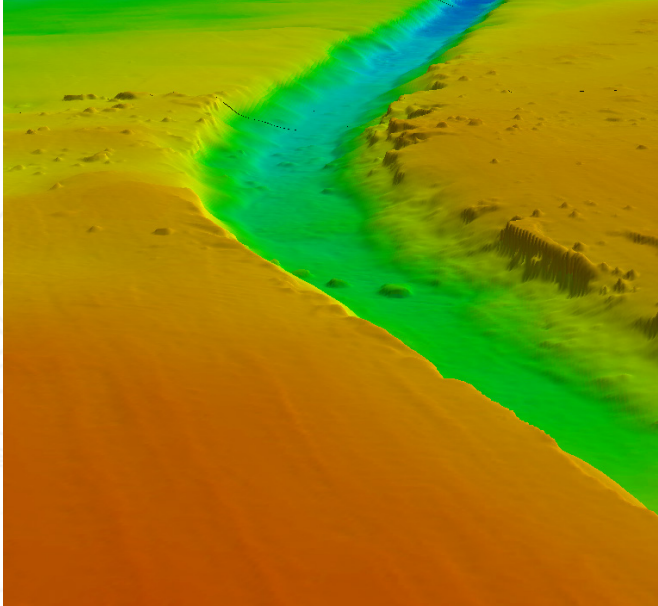
Skjold R provides surveys in such high quality, that they fulfil all requirements for **official contractual documentation**. This survey vessel is, with its high speed and outstanding manoeuvrability, qualified for all kinds of survey activities.

Furthermore, Skjold R is capable of quickly providing our dredgers with comprehensive surveys, ensuring precise and continuous **monitoring of dredging activities**.



Nordic mythology

Skjold is a legendary king of Denmark. He was believed to be the son of the god Odin and the magical woman Rind. Skjold is in accordance to legends also direct ancestor to the Danish royal family.



SPECIFICATIONS

Call sign	OX3103
MMSI	219023635
Gross Tonnage	7.9 GT
LOA	11.90 m
Breadth	3.95 m
Draught	0.90 m
Main engine	2x 320 kW
Total power installed	643 kW
Speed	35 kn
Type	Broson X90
Flag	Danish

